

 Selection Mantra✓



SSC CGL

8000⁺ TCS MCQS
Till FEB 2025

Marked Must Revise Questions (MRQ) For Quick Preparations

Chapterwise & Typewise Questions
TIER 1 & 2 EXAMS

Cover

- ✓ REASONING
- ✓ GENERAL AWARENESS
- ✓ MATHS
- ✓ ENGLISH

FREE

- 5 Online CBT Tests
- Monthly Current Affairs Magazine (QR Code)



SSC CGL Tier 1 TREND ANALYSIS											
		Held on: (9 Sep 2024 S - 1)	Held on: (12 Sep 2024 S - 3)	Held on: (18 Sep 2024 S - 2)	Held on: (25 Jul 2023 S - 3)	Held on: (27 Jul 2023 S - 3)	Held on: (1 Dec 2022 S - 1)	Held on: (11 Apr 2022 S - 1)	Held on: (13 Aug 2021 S - 3)	Held on: (3 Mar 2020 S - 3)	Held on: (4 June 2019 S - 2)
SECTION (A): GENERAL AWARENESS											
1	History	5	4	4	4	5	4	5	3	4	4
2	Geography	2	3	4	4	3	2	2	3	1	2
3	Polity	2	1	2	2	2	2	1	2	-	2
4	Economics	2	3	2	1	2	1	2	3	1	-
5	Sports	1	2	2	3	1	1	2	1	2	1
6	Static GK	5	5	3	7	5	6	6	6	8	6
7	Physics	-	1	-	1	1	2	-	-	1	-
8	Chemistry	2	1	2	1	2	2	-	1	1	3
9	Biology	2	1	2	1	1	1	3	1	2	1
10	Current affairs	4	4	4	1	3	4	4	5	5	6
	Total	25	25	25	25	25	25	25	25	25	25
SECTION (B): GENERAL INTELLIGENCE AND REASONING											
1	Analogies	4	5	5	6	7	5	2	2	5	6
2	Classification	2	2	3	1	2	2	1	1	3	3
3	Directions							1			
4	Number & Alphabetical Series	5	4	4	3	2	3	3	4	2	2
5	Coding and Decoding	2	2	3	3	1	2	4	3	2	2
6	Logical Sequence				1		1	1	1	1	1
7	Arithmetic Reasoning							1	1	1	1
8	Mathematical Operations	2	2	2	2	3	3	2	2	1	1
9	Seating Arrangement								1		
10	Blood Relationships	1	1	1	2	1	2	1	1	1	1
11	Calender				1						
12	Syllogism	2	1			3	2	1	1	1	1
13	Counting of Figure	1	1	1						1	1
14	Venn Diagram		1					1	1	1	1
15	Order and Ranking							1			
16	Puzzle										
17	Cube & Dice	2	2		1		1	1	1	1	1
18	Missing Number							1	1	1	
19	Paper Cutting and Folding		1	2				1	1	1	1
20	Completion of Figure										
21	Mirror and Water Image	2	1	1	2	3	1	1	1	1	1
22	Embedded Figure			1	1	1	1	1	1	1	1
23	Non-Verbal Series	2	2	2	2	2	2	1	2	1	1
	Total	25	25	25	25	25	25	25	25	25	25
SECTION (C): QUANTITATIVE APTITUDE											
1	Number system	1	2	1		2	1	1	1	1	1
2	BODMAS, Decimals, Fractions			1	1	1		1	2	2	1
3	LCM & HCF						1	1			
5	Average & Ages	1		2		1	1	1	1	1	1
6	Ratio and Proportion & Partnership	1	1	1	1	2	1	1	1	1	1

SSC CGL Tier 1 Cut off 2024 for Junior Statistical Officer

Categories	UR	SC	ST	OBC	EWS	OH	HH	VH
Cut Off Marks	167.02061	143.53855	135.23007	160.65216	161.73406	133.35717	95.45162	122.51903
Candidates Available	2844	3640	1935	6839	2504	217	210	247
Total Candidates: 18436								

SSC CGL Tier 1 Cut off 2024 for Statistical Investigator

Categories	UR	ST	OBC	EWS	HH	VH	PwD Others
Cut Off Marks	170.65672	134.49545	161.13462	163.50858	60.66162	92.05218	40.30795
Candidates Available	276	485	1106	352	213	181	220
Total Candidates: 2833							

SSC CGL Tier 1 Cut off 2024 for all Other Posts

Categories	UR	SC	ST	OBC	EWS	ESM	OH	HH	VH	PwD Others
Cut Off Marks	153.18981	126.45554	111.8893	146.26291	142.01963	69.92674	113.10008	64.79156	102.97465	45.74
Candidates Available	25814	31131	16019	50191	23746	11133	2093	2042	1694	1377
Total Candidates: 165240										

SSC CGL Tier 1 Cut off 2023

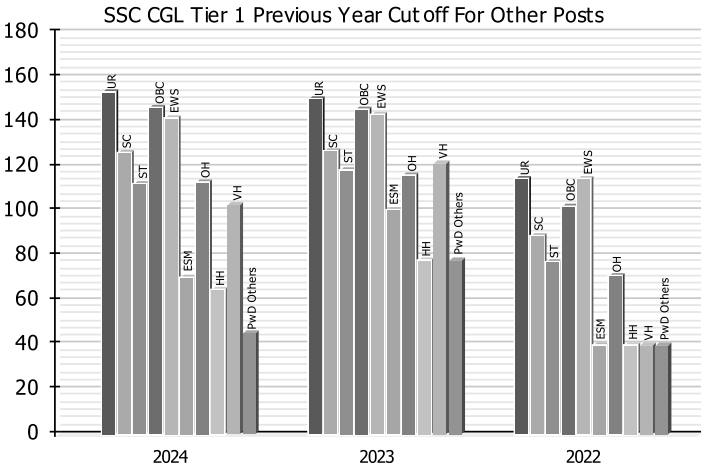
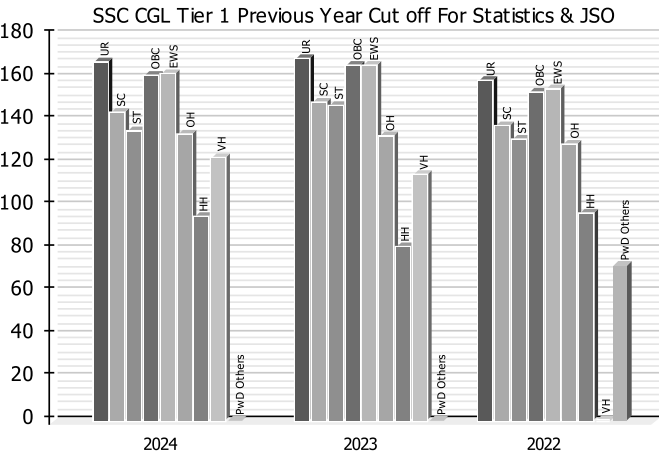
Categories	UR	SC	ST	OBC	EWS	ESM	OH	HH	VH	PwD Others
Finance & Accounts and AAO	169.67168	154.29292	148.98918	166.28763	167.18331	-	147.95269	126.864	-	109.82718
Statistics & JSO	168.53975	148.50911	146.65109	165.86857	166.0675	-	132.72381	80.99998	114.60998	-
Other Posts	150.04936	126.68201	118.16655	145.93743	143.44441	100.29326	115.98466	77.72754	121.59662	77.72754

SSC CGL Tier 1 Previous Year Cut off For Statistics & JSO

Categories	UR	SC	ST	OBC	EWS	ESM	OH	HH	VH	PwD Others
2024	167.02061	143.53855	135.23007	160.65216	161.73406	-	133.35717	95.45162	122.51903	-
2023	168.53975	148.50911	146.65109	165.86857	166.06750	-	132.72381	80.99998	114.60998	-
2022	158.36	137.54	131.03	152.92	154.80	-	128.59	96.45	-	72.79

SSC CGL Tier 1 Previous Year Cut off For Other Posts

Categories	UR	SC	ST	OBC	EWS	ESM	OH	HH	VH	PwD Others
2024	153.18981	126.45554	111.88930	146.26291	142.01963	69.92674	113.10008	64.79156	102.97465	45.74000
2023	150.04936	126.68201	118.16655	145.93743	143.44441	100.29326	115.98466	77.72754	121.59662	77.72754
2022	114.27	89.08	77.57	102.35	114.27	40	70.69	40	40	40





CONTENTS

General Intelligence & Reasoning

PART-A: VERBAL REASONING

1. Analogy.....3-24
2. Classification (Odd One Out) 25-38
3. Alphabet Series..... 39-51
4. Number Series 52-57
5. Missing Number..... 58-59
6. Coding Decoding..... 60-72
7. Logical Arrangement of Words 73-78
8. Blood Relation..... 79-87
9. Venn Diagram..... 88-94
10. Syllogism 95-107
11. Cube and Dice..... 108-116
12. Seating Arrangement..... 117-118
13. Mathematical Operation..... 119-128
14. Arithmetic Reasoning..... 129-132

PART-B: NON-VERBAL REASONING

15. Completion of Figure 133-134
16. Non-Verbal Series..... 135-146
17. Mirror & Water Images..... 147-156
18. Paper Cutting & Folding 157-162
19. Embedded Figure 163-169

Quantitative Aptitude

PART-A: ARITHMETIC

1. Number System..... 173-178
2. HCF and LCM..... 179-181
3. Simplification..... 182-189
4. Average and Ages..... 190-198
5. Percentage..... 199-210
6. Profit and Loss & Discount 211-228
7. Pipe and Cistern 229-233
8. Speed, Time and Distance..... 234-243
9. Boat and Stream..... 244-248
10. Ratio and Proportion..... 249-256
11. Mixture and Alligation 257-259
12. Time and Work 260-274
13. Simple Interest..... 275-282
14. Compound Interest..... 283-285
15. Data Interpretation..... 286-315

PART-B: ADVANCED

16. Algebra..... 316-337
17. Mensuration..... 338-350
18. Geometry 351-387
19. Trigonometry & Heights
and Distances 388-416

General Awareness

PART-A: GENERAL AWARENESS

1. History..... 419-439
2. Geography..... 440-457
3. Polity..... 458-471
4. Indian Economy..... 472-485
5. Static GK..... 486-520
6. Current Affairs..... 521-547

PART-B: GENERAL SCIENCE

7. Physics..... 548-551
8. Chemistry..... 552-560
9. Biology..... 561-571
10. Environment & Ecology..... 572-576

PART-C: COMPUTER AWARENESS

11. Computer Knowledge 577-582

English Language

PART-A: GRAMMAR

1. Error Spotting..... 585-606
2. Sentence Improvement..... 607-627
3. Fill in the Blanks..... 628-636
4. Narration..... 637-652
5. Voice..... 653-673

PART-B: VOCABULARY

6. Synonym..... 674-685
7. Antonym..... 686-697
8. Idioms & Phrases..... 698-708
9. One Word Substitution..... 709-723
10. Spelling Error..... 724-730

PART-C: COMPREHENSION

11. Cloze Test..... 731-767
12. Para Jumbles..... 768-789
13. Reading Comprehension..... 790-792

5 ONLINE COMPUTER BASED TESTS



SCAN ME

MONTHLY CURRENT AFFAIRS MAGAZINE



SCAN ME

Analogy

WORD BASED ANALOGY

1. The way, in which the verb 'deed' is related to 'reaction', _____ is related to 'inciting'. (CGL 4 June, 2019 S-2)

(a) Foresight (b) Feedback
(c) Response (d) Welcome

2. Select the option that is related to the third word in the same way as the second word is related to the first word. (The words must be considered as meaningful English words and must not be related to each other based on the number of letters/number of consonants/vowels in the word)

Phone : Talk :: Television : ?

(CGL 01 Dec., 2022 S-1)

(a) Remote (b) View
(c) Read (d) Channel

3. Select the word-pair that best represents a similar relationship to the one expressed in the pair of words given below.

(The words must be considered as meaningful English words and must NOT be related to each other based on the number of letters/number of consonants/vowels in the word) (CGL 9 Sep., 2024 S-2)

Egypt : Nile

(a) South Korea : Mekong
(b) Brazil : Colorado
(c) Russia : Mississippi
(d) Myanmar : Irrawaddy

4. 'Blossom' is related to 'Wither' in the same way as 'Stagnate' is related to '_____'. (The word must be considered as meaningful English words and must not be related to each other based on the number of letters/number of consonants/vowels in the word). (CGL 10 Sep., 2024 S-1)

(a) Stand (b) Rest
(c) Flow (d) Language

5. Select the option that is related to the third word in the same way as the second word is related to the first word. (The words must be considered as meaningful English words and must not be related to each other based on the number of letters/number of consonants/vowels in the word).

[MRQ*] (CGL 10 Sep., 2024 S-1)

Temerity : Shyness :: Pique:?

(a) Resentment (b) Offence
(c) Anger (d) Delight

6. Select the word pair that best represents a similar relationship to the one expressed in the pair of words given below. (The words must be considered as meaningful English words and must not be related to each other based on the number of letters/number of consonants/vowels in the word)

Presence : Abundance (CGL 10 Sep., 2024 S-3)

(a) Nourish : Neglect
(b) Abstract : Concrete
(c) Infinite : Cosmic
(d) Concise : Verbose

7. Select the word pair that best represents a similar relationship to the one expressed in the pair of words given below. (The words must be considered as meaningful English words and must not be related to each other based on the number of letters/number of consonants/vowels in the word)

Calcium : Osteomalacia

(CGL 11 Sep., 2024 S-3)

(a) Lungs : Tuberculosis
(b) Iron : Anaemia
(c) Heart : Cardiovascular
(d) Stomach : Blindness

8. Select the option that is related to the third word in the same way as the second word is related to the first word. (The words must be considered as meaningful English words and must not be related to each other based on the number of letters/number of consonants/vowels in the word.).

Acrimony : Humanity :: wield : ?

[MRQ*] (CGL 11 Sep., 2024 S-1)

(a) Appoint (b) Restraint
(c) Forge (d) Pull

9. 'Summer' is related to 'Season' in the same way as 'Cotton' is related to '_____'. (CGL 11 Sep., 2024 S-1)

(a) Grain (b) Tree (c) Dye (d) Cloth

10. 'Lavish' is related to 'Austere' in the same way as 'Prejudiced' is related to '_____'. (The words must be considered as meaningful English words and must not be related to each other based on the number of letters/number of consonants/vowels in the word.) (CGL 11 Sep., 2024 S-2)

(a) Impartial (b) Compromised
(c) Careful (d) Thoughtful

11. Select the word-pair that best represents a similar relationship to the one expressed in the pair of words given below.

(The words must be considered as meaningful English words and must NOT be related to each other based on the number of letters/number of consonants/vowels in the word)

Virus : Parasite (CGL 12 Sep., 2024 S-1)

(a) Amaltas : Tree
(b) Fungus : Jasmine
(c) Algae : Flower
(d) Fenugreek : Micro organism

12. Select the word-pair that best represents a similar relationship to the one expressed in the pair of words given below.

(The words must be considered as meaningful English words and must NOT be related to each other based on the number of letters/number of consonants/vowels in the word)

Duleep Trophy : Cricket

(CGL 12 Sep., 2024 S-2)

(a) Burdwan Trophy : Polo
(b) Agha Khan Cup : Hockey
(c) Dhyan Chand Trophy : Badminton
(d) Durand Cup : Cricket

13. Select the option that is related to the third word in the same way as the second word is related to the first word. (The words must be considered as meaningful English words and must not be related to each other based on the number of letters/number of consonants/vowels in the word)

Frivolous : Big :: Deride :?

[MRQ*] (CGL 13 Sep., 2024 S-1)

(a) Encourage (b) Taunt
(c) Jeer (d) Detest

14. 'Ample' is related to 'Abundant' in the same way as 'Substantial' is related to '_____'. (The words must be considered as meaningful English words and must not be related to each other based on the number of letters/number of consonants/vowels in the word.) [MRQ*] (CGL 13 Sep., 2024 S-1)

(a) Considerable (b) Venerable
(c) Meager (d) Scarce

15. Vacant is related to Empty in the same way as 'Crowd' is related to

[MRQ³] (CGL 13 Sep., 2024 S-2)

- (a) Throes (b) Disband
(c) loner. (d) Throng

16. Select the option that is related to the third word in the same way as the second word is related to the first word. (The words must be considered as meaningful English words and must NOT be related to each other based on the number of letters/number of consonants/vowels in the word)

Magician : Magic :: Dancer : ?

(CGL 13 Sep., 2024 S-3)

- (a) Movie (b) Song
(c) Theatre (d) Dance

17. 'Magnify' is related to 'Expand' in the same way as 'Curtail' is related to '_____'.
[MRQ³] (CGL 17 Sep., 2024 S-1)

- (a) Restrict (b) Measure
(c) Big (d) Small

18. 'Noise' is related to 'Silence' in the same way as 'Light' is related to '_____'.
(CGL 17 Sep., 2024 S-2)

- (a) Warmth (b) Radiant
(c) Brightness (d) Darkness

19. 'Meek' is related to 'Bold' in the same way as 'Spend' is related to '_____'.
(The words must be considered as meaningful English words and must not be related to each other based on the number of letters/number of consonants/vowels in the word.) (CGL 17 Sep., 2024 S-3)

- (a) Expend (b) Donate
(c) Pay (d) Hoard

20. Select the option that is related to the third word in the same way as the second word is related to the first word.
(The words must be considered as meaningful English words and must not be related to each other based on the number of letters/number of consonants/vowels in the word)

Sugar : Sweet :: Habanero : ?
[MRQ³] (CGL 18 Sep., 2024 S-1)

(a) Sour (b) Spicy (c) Salty (d) Bitter

21. 'Persist' is related to 'Endure' in the same way as 'stall' is related to '_____'.
The words must be considered as meaningful English words and must not be related to each other based on the number of letters/number of consonants/vowels in the word.
(CGL 18 Sep., 2024 S-2)

- (a) Delay (b) Progress
(c) Complain (d) Surge

22. Select the option that is related to the third word in the same way as the second word is

related to the first word. (The words must be considered as meaningful English words and must NOT be related to each other based on the number of letters/number of consonants/vowels in the word.)

Plant : Pot :: Fish : ? (CGL 25 July., 2023 S-3)

- (a) Mud (b) Sand
(c) Stone (d) Aquarium

23. Select the option that is related to the third word in the same way as the second word is related to the first word. (The words must be considered as meaningful English words and must not be related to each other based on the number of letters/number of consonants/vowels in the word.)

Cow : Milk :: Sheep : ?
(CGL 25 July., 2023 S-3)

- (a) Wool (b) Baby (c) Silk (d) Clothes

24. Select the option that is related to the third word in the same way as the second word is related to the first word. (The words must be considered as meaningful English words and must not be related to each other based on the number of letters/number of consonants/vowels in the word)

Vacant : Empty :: Enormous : ?
[MRQ³] (CGL 27 July., 2023 S-2)

- (a) Sufficient (b) Ample
(c) Huge (d) Small

25. Select the option that is related to the third word in the same way as the second word is related to the first word. (The words must be considered as meaningful English words and must not be related to each other based on the number of letters/number of consonants/vowels in the word.)

India: Royal Bengal Tiger :: Australia: ?
(CGL 27 July., 2023 S-3)

- (a) Horse (b) Dragon
(c) Kangaroo (d) Elephant

26. Select the option that is related to the third word in the same way as the second word is related to the first word. (The words must be considered as meaningful English words and must not be related to each other based on the number of letters/number of consonants/vowels in the word.)

Library : Books :: Museum : ?
(CGL 01 Dec., 2022 S-1)

- (a) Building (b) Artefacts
(c) People (d) Gallery

27. Select the word-pair that best represents a similar relationship to the one expressed in the pair of words given below. (The words must be considered as meaningful English words and must not be related to each other based on the number of letters/numbers of consonants/vowels in the word)

Race : Track (CGL 05 Dec., 2022 S-2)

- (a) Athletics : Stadium
(b) Cart : Wheel
(c) Wrestling : Court
(d) Exercise : Course

28. Select the option in which the words share the same relationship as that shared by the given pair of words.

Handwriting : Graphology
(CGL 13 Aug., 2021 S-3)

- (a) Soil : Ornithology
(b) Earthquakes : Pomology
(c) Matter : Physics
(d) Fossils : Pedology

29. Select the option that is related to the third word in the same way as the second word is related to the first word.

Nascent : Young :: Adjunct : ?
(CGL 13 Aug., 2021 S-3)

- (a) Against (b) Supportive
(c) Functional (d) Rigid

30. Select the option in which the words share the same relationship as that shared by the given pair of words.

Calendar: Date
(CGL 3 March, 2020 S-3)

- (a) Class: Group (b) Weight: Kilogram
(c) Food: Vegetarian (d) Clock: Time

31. 'Beverages' is related to 'Tea' in the same way as 'Medicine' is related to '_____'.
(CGL 3 March, 2020 S-3)

- (a) Doctor (b) Hospital
(c) Analgesics (d) Disease

32. From the given options, select the word pair whose two words are related to each other in the same way as the words of the word pair below are related.

Heat: Sun
(CGL 4 June, 2019 S-2)

- (a) House: Terrace
(b) Vitamin: Fruit
(c) Environment: Humidity
(d) Ride: car

33. Select the option that is related to the third word in the same way as the second word is related to the first word.

(The words must be considered as meaningful English words and must not be related to each other based on the number of letters/number of consonants/vowels in the word.)

Movie : Director :: Orchestra : ?
(CGL 05 Dec., 2022 S-1)

- (a) Choreographer (b) Conductor
(c) Dancer (d) Audience

34. Select the word – pair that best represents a similar relationship to the one expressed in the pair of words given below.

(The words must be considered as meaningful English words and must not be related to each other based on the number of letters/numbers of consonants/vowels in the word)

Race : Track
(CGL 15 Dec., 2022 S-2)

- (a) Athletics : Stadium
(b) Cart : Wheel
(c) Wrestling : Court
(d) Exercise : Course

35. Select the option that is related to the third word in the same way as the second word is related to the first word.

(The words must be considered as meaningful English words and must not be related to each other based on the number of letters/number of consonants/vowels in the word.)

Library : Books :: Museum : ?

(CGL 01 Dec., 2022 S-1)

- (a) Building (b) Arte facts
(c) People (d) Gallery

36. Select the option that is related to the third word in the same way as the second word is related to the first word. (The words must be considered as meaningful English words and must not be related to each other based on the number of letters/number of consonants/vowels in the word)

Phone : Talk :: Television : ?

(CGL 01 Dec., 2022 S-1)

- (a) Remote (b) View
(c) Read (d) Channel

37. Select the option that is related to the third word in the same way as the second word is related to the first word. is related to (Shows are to be treated as meaningful English/Hindi shows and the numbers in numbers /The names should not be related to each other on the basis of number of births/number of rows.)

Panda : Bamboo :: Koala : ?

(CGL 02 Dec., 2022 S-1)

- (a) bark (b) Grass
(c) eucalyptus (d) fish

38. Select the option that is related to the third word in the same way as the second word is related to the first word. (The words must be considered as meaningful English words and must not be related to each other based on the number of letters/number of consonants/vowels in the word)

Earth : Planet :: Moon : ?

(CGL 01 Dec., 2022 S-3)

- (a) Rocket (b) Space
(c) Satellite (d) Orbit

39. Select the option that is related to the third word in the same way as the second word is related to the first word. (The words must be considered as meaningful English words and must not be related to each other based on the number of letters/number of consonants/vowels in the word.)

Cloth : Closet :: Gun : ?

(CGL 02 Dec., 2022 S-3)

- (a) Armoury (b) Almirah
(c) Bullet (d) Chest

40. Select the word – pair that best represents a similar relationship to the one expressed in the pair of words given below. (The words must be considered as meaningful English words and must not be related to each other based on the number of letters/number of consonants/vowels in the word.)

Sparrows : Tree (CGL 02 Dec., 2022 S-3)

- (a) Cow : Beach (b) Fish : Water
(c) Owl : Night (d) Rabbit : Sand

NUMBER BASED ANALOGY

41. Select the set in which the numbers are related in the same way as are the numbers of the following sets.

(Note: Operations should be performed on the whole numbers, without breaking down the numbers into its constituent digits.

E.g. 13 – Operations on 13 such as adding / subtracting / multiplying etc. to 13 can be performed. Breaking down 13 into 1 and 3 and then performing mathematical operations on 1 and 3 is not allowed.)

(215, 185, 135) (276, 246, 196)

(CGL Tier-2, 18 Jan., 2025, S-1)

- (a) (255, 235, 205) (b) (294, 264, 224)
(c) (269, 229, 199) (d) (238, 208, 158)

42. 17 is related to 159 following a certain logic. Following the same logic, 11 is related to 105. To which of the following is 13 related, following the same logic?

(Note: Operations should be performed on the whole numbers, without breaking down the numbers into its constituent digits. E.g. 13 – Operations on 13 such as adding /subtracting / multiplying etc. to 13 can be performed. Breaking down 13 into 1 and 3 and then performing mathematical operations on 1 and 3 is not allowed.)

(CGL Tier-2, 20 Jan., 2025, S-1)

- (a) 116 (b) 103 (c) 123 (d) 109

43. Select the set in which the numbers are related in the same way as are the numbers of the given set.

(Note: Operations should be performed on the whole numbers, without breaking down the number into its constituent digits.

E.g. 13 – Operations on 13 such as adding /Subtracting /multiplying etc. to 13 can be performed Breaking down 13 into 1 and 3 and then performing mathematical operations on 1 and 3 is not allowed.)

(25, 150, 3) (18, 180, 5)

(CGL 25 July., 2023 S-3)

- (a) (13, 39, 3) (b) (101, 408, 2)
(c) (52, 728, 7) (d) (61, 601, 5)

44. Select the option that is related to the fifth number in the same way as the second number is related to the first number and the fourth number is related to the third number.
7 : 35 :: 21 : 399 :: 4 : ?

(CGL 25 July., 2023 S-3)

- (a) 24 (b) 20 (c) 8 (d) 12

45. Select the option that is related to the fifth number in the same way as the second number is related to the first number and the fourth number is related to the third number.
750 : 5 :: 384 : 4 :: 3072 : ?

(CGL 25 July., 2023 S-3)

- (a) 8 (b) 9 (c) 6 (d) 7

46. 31 is related to 152 by certain logic. Following the same logic, 47 is related to 168. To which of the following is 66 related, following the same logic? (Note: Operations should be performed on the whole numbers, without breaking down the numbers into its constituent digits. E.g. 13 – Operations on 13 such as adding /deleting /multiplying etc., to 13 can be performed. Breaking down 13 into 1 and 3 and then performing mathematical operations on 1 and 3 is not allowed.)

(CGL 9 Sep., 2024 S-1)

- (a) 180 (b) 187 (c) 185 (d) 190

47. Select the option in which the numbers share the same relationship as that shared by the given pair of numbers.

(149, 213), (168, 232)

(Note: Operations should be performed on the whole numbers, without breaking down the numbers into its constituent digits. E.g. 13 – Operations on 13 such as adding/deleting/multiplying etc. to 13 can be performed. Breaking down 13 into 1 and 3 and then performing mathematical operations on 1 and 3 is not allowed.)

(CGL 9 Sep., 2024 S-1)

- (a) (162, 222) (b) (153, 217)
(c) (137, 211) (d) (144, 198)

48. Select the triad in which the numbers are related in the same way as are the numbers of the following triads.

(Note: Operations should be performed on the whole numbers, without breaking down the numbers into its constituent digits. E.g., 13 – Operations on 13 such as adding/deleting/multiplying etc. to 13 can be performed. Breaking down 13 into 1 and 3 and then performing mathematical operations on 1 and 3 is not allowed.)

(2, 3, 17) (5, 2, 21) (CGL 9 Sep., 2024 S-2)

- (a) (3, 4, 23) (b) (5, 6, 72)
(c) (2, 5, 42) (d) (1, 4, 17)

49. Select the set in which the numbers are related in the same way as are the numbers of the following sets.

(Note: Operations should be performed on the whole numbers, without breaking down the numbers into its constituent digits. E.g. 13 – Operations on 13 such as adding /deleting /multiplying etc. to 13 can be performed. Breaking down 13 into 1 and 3 and then performing mathematical operations on 1 and 3 is not allowed.)

(18, 378, 7) (14, 210, 5)

(CGL 9 Sep., 2024 S-2)

- (a) (17, 272, 8) (b) (17, 204, 6)
(c) (23, 230, 5) (d) (15, 405, 9)

50. In the following number-pairs, the second number is obtained by applying certain mathematical operations to the first number. Select the set in which the numbers are related in the same way as are the numbers of the following sets. (Note: Operations should be performed on the whole numbers, without breaking down the numbers into its constituent digits. E.g. 13 – Operations on 13 such as adding /deleting /multiplying etc., to 13 can be performed. Breaking down 13 into 1 and 3 and then performing mathematical operations on 1 and 3 is not allowed.) (12, 145) (9, 82)

(CGL 9 Sep., 2024 S-3)

- (a) (22, 483) (b) (16, 256)
(c) (14, 197) (d) (8, 69)

51. Select the set in which the numbers are related in the same way as are the numbers of the following sets. (Note: Operations should be performed on the whole numbers, without breaking down the numbers into its constituent digits. E.g. 13 – Operations on 13 such as adding /deleting /multiplying etc. to 13 can be performed. Breaking down 13 into 1 and 3 and then performing mathematical operations on 1 and 3 is not allowed.) (19, 456, 6) (16, 320, 5)

(CGL 9 Sep., 2024 S-3)

- (a) (18, 648, 9) (b) (14, 210, 5)
(c) (21, 504, 8) (d) (18, 378, 7)

52. Select the set in which the numbers are related in the same way as are the numbers of the following sets. (34, 47, 62) (119, 142, 167) (Note: Operations should be performed on the whole numbers, without breaking down the numbers into its constituent digits. E.g. 13 – Operations on 13 such as adding /deleting /multiplying etc. to 13 can be performed. Breaking down 13 into 1 and 3 and then performing mathematical operations on 1 and 3 is not allowed) (CGL 9 Sep., 2024 S-3)

- (a) (64, 78, 99) (b) (48, 65, 82)
(c) (27, 38, 51) (d) (79, 98, 119)

53. 10 is related to 15 following certain logic. Following the same logic, 42 is related to 63. To which of the following numbers is 22 related, following the same logic?

(Note: Operations should be performed on the whole numbers, without breaking down the numbers into its constituent digits. E.g. 13 – Operations on 13 such as adding/deleting/multiplying etc., to 13 can be performed. Breaking down 13 into 1 and 3 and then performing mathematical operations on 1 and 3 is not allowed.)

(CGL 10 Sep., 2024 S-1)

- (a) 31 (b) 33 (c) 28 (d) 30

54. Select the set in which the numbers are related in the same way as are the numbers of the following set. (CGL 10 Sep., 2024 S-1) (79, 58, 62) (54, 33, 37)

(Note: Operations should be performed on the whole numbers, without breaking down the numbers into its constituent digits. E.g. 13 – Operations on 13 such as adding/deleting/multiplying etc. to 13 can be performed. Breaking down 13 into 1 and 3 and then performing mathematical operations on 1 and 3 is not allowed)

- (a) (59, 33, 43) (b) (66, 45, 49)
(c) (47, 36, 41) (d) (43, 25, 30)

55. Select the set in which the numbers are related in the same way as are the numbers of the following set.

(7, 9, 48) (6, 8, 42)

(Note: Operations should be performed on the whole numbers, without breaking down the numbers into its constituent digits. E.g. 13 – Operations on 13 such as adding/deleting/multiplying etc. to 13 can be performed. Breaking down 13 into 1 and 3 and then performing mathematical operations on 1 and 3 is not allowed.)

(CGL 10 Sep., 2024 S-1)

- (a) (10, 12, 54) (b) (9, 11, 56)
(c) (11, 13, 72) (d) (8, 10, 47)

56. Select the pair in which the numbers are related to each other in the same way as are the numbers in the given pairs.

(Note: Operations should be performed on the whole numbers, without breaking down the numbers into its constituent digits. E.g. 13 – Operations on 13 such as adding /deleting/multiplying etc. to 13 can be performed. Breaking down 13 into 1 and 3 and then performing mathematical operations on 1 and 3 is not allowed.)

12 : 25, 11 : 23 (CGL 10 Sep., 2024 S-2)

- (a) 15 : 29 (b) 18 : 35
(c) 25 : 49 (d) 21 : 43

57. 104 is related to 13 following a certain logic. Following the same logic, 136 is related to 17. To which of the following is 232 related, following the same logic?

(Note: Operations should be performed on the whole numbers, without breaking down the numbers into its constituent digits. E.g. 13 – Operations on 13 such as adding /deleting /multiplying etc. to 13 can be performed. Breaking down 13 into 1 and 3 and then performing mathematical operations on 1 and 3 is not allowed)

(CGL 10 Sep., 2024 S-2)

- (a) 31 (b) 27 (c) 29 (d) 33

58. Select the set in which the numbers are related in the same way as are the numbers of the following sets.

(Note: Operations should be performed on the whole numbers, without breaking down the numbers into its constituent digits. E.g. 13 – Operations on 13 such as adding /deleting /multiplying etc. to 13 can be performed. Breaking down 13 into 1 and 3 and then performing mathematical operations on 1 and 3 is not allowed.)

(25, 300, 6) (19, 342, 9)

(CGL 10 Sep., 2024 S-2)

- (a) (24, 600, 5) (b) (14, 364, 7)
(c) (17, 476, 7) (d) (18, 288, 8)

59. Select the set in which the numbers are related in the same way as are the numbers of the following sets.

(173, 246) (148, 196)

(Note: Operations should be performed on the whole numbers, without breaking down the numbers into its constituent digits. E.g. 13 – Operations on 13 such as adding /deleting /multiplying etc. to 13 can be performed. Breaking down 13 into 1 and 3 and then performing mathematical operations on 1 and 3 is not allowed)

[MRQ*] (CGL 10 Sep., 2024 S-3)

- (a) (127, 194) (b) (142, 176)
(c) (154, 208) (d) (169, 247)

60. Select the set in which the numbers are related in the same way as are the numbers of the following set.

(121, 93, 214) (115, 87, 202)

(Note: Operations should be performed on the whole numbers, without breaking down the numbers into its constituent digits. E.g. 13 – Operations on 13 such as adding/subtracting/multiplying etc. to 13 can be performed. Breaking down 13 into 1 and 3 and then performing mathematical operations on 1 and 3 is not allowed.)

(CGL 10 Sep., 2024 S-3)

- (a) (135, 117, 259) (b) (97, 112, 209)
(c) (110, 94, 224) (d) (84, 99, 189)

61. 62 is related to 79 following certain logic. Following the same logic, 98 is related to 119. To which of the following numbers is 14 related, following the same logic?

(Note: Operations should be performed on the whole numbers, without breaking down the numbers into its constituent digits. E.g. 13 – Operations on 13 such as adding /deleting /multiplying etc., to 13 can be performed. Breaking down 13 into 1 and 3 and then performing mathematical operations on 1 and 3 is not allowed.)

(CGL 10 Sep., 2024 S-3)

- (a) 19 (b) 21 (c) 23 (d) 24

62. In the following number-pairs, the second number is obtained by applying certain mathematical operations to the first number. Select the set in which the numbers are related in the same way as are the numbers of the following sets.

(**Note:** Operations should be performed on the whole numbers, without breaking down the numbers into its constituent digits. E.g. 13 – Operations on 13 such as adding /deleting /multiplying etc., to 13 can be performed. Breaking down 13 into 1 and 3 and then performing mathematical operations on 1 and 3 is not allowed.)

(280, 140), (186, 93)

(CGL 11 Sep., 2024 S-1)

- (a) (92, 51) (b) (86, 48)
(c) (166, 84) (d) (118, 59)

63. 16 is related to 112 following a certain logic. Following the same logic, 26 is related to 182. To which of the following is 44 related, following the same logic?

(**Note:** Operations should be performed on the whole numbers, without breaking down the numbers into its constituent digits. E.g. 13 – Operations on 13 such as adding /deleting /multiplying etc. to 13 can be performed. Breaking down 13 into 1 and 3 and then performing mathematical operations on 1 and 3 is not allowed)

(CGL 11 Sep., 2024 S-1)

- (a) 310 (b) 302 (c) 308 (d) 312

64. 8 is related to 512 following a certain logic. Following the same logic, 12 is related to 1728. To which of the following is 15 related, following the same logic?

(**Note:** Operations should be performed on the whole numbers, without breaking down the numbers into its constituent digits. E.g. 13 – Operations on 13 such as adding /deleting /multiplying etc. to 13 can be performed. Breaking down 13 into 1 and 3 and then performing mathematical operations on 1 and 3 is not allowed)

(CGL 11 Sep., 2024 S-1)

- (a) 3375 (b) 2725 (c) 3735 (d) 2275

65. Select the set in which the numbers are related in the same way as are the numbers of the following set.

(34, 15, 64) (29, 17, 63)

(**Note:** Operations should be performed on the whole numbers, without breaking down the numbers into its constituent digits. E.g. 13 – Operations on 13 such as adding/deleting/multiplying etc. to 13 can be performed. Breaking down 13 into 1 and 3 and then performing mathematical operations on 1 and 3 is not allowed.)

(CGL 11 Sep., 2024 S-2)

- (a) (25, 14, 53) (b) (24, 28, 76)
(c) (44, 32, 98) (d) (31, 23, 54)

66. Select the option in which the numbers share the same relationship as that shared by the given pair of numbers.

(**Note:** Operations should be performed on the whole numbers, without breaking

down the numbers into its constituent digits. E.g. 13 – Operations on 13 such as adding/deleting/multiplying etc. to 13 can be performed. Breaking down 13 into 1 and 3 and then performing mathematical operations on 1 and 3 is not allowed.)

186 : 103 156 : 73

(CGL 11 Sep., 2024 S-2)

- (a) 119 : 35 (b) 208 : 127
(c) 95 : 12 (d) 83 : 1

67. Select the triad in which the numbers are related to each other in the same way as the numbers in the following triads.

8-17-35 23-47-95

(**Note:** Operations should be performed on the whole numbers, without breaking down the numbers into its constituent digits. E.g. 13 – Operations on 13 such as adding/deleting/multiplying etc., to 13 can be performed. Breaking down 13 into 1 and 3 and then performing mathematical operations on 1 and 3 is not allowed.)

(CGL 11 Sep., 2024 S-2)

- (a) 13-29-55 (b) 12-25-51
(c) 9-20-41 (d) 16-32-62

68. Select the set in which the numbers are related in the same way as are the numbers of the following set.

(66, 57, 48) (94, 85, 76)

(**Note:** Operations should be performed on the whole numbers, without breaking down the numbers into its constituent digits. E.g. 13 – Operations on 13 such as adding/deleting/multiplying etc. to 13 can be performed. Breaking down 13 into 1 and 3 and then performing mathematical operations on 1 and 3 is not allowed.)

(CGL 11 Sep., 2024 S-3)

- (a) (85, 77, 64) (b) (79, 70, 59)
(c) (81, 72, 63) (d) (98, 90, 83)

69. Select the option in which the numbers share the same relationship as that shared by the given pair of numbers.

(**Note:** Operations should be performed on the whole numbers, without breaking down the numbers into its constituent digits. E.g. 13 – Operations on 13 such as adding/deleting/multiplying etc. to 13 can be performed. Breaking down 13 into 1 and 3 and then performing mathematical operations on 1 and 3 is not allowed.)

17 : 253 19 : 271

(CGL 11 Sep., 2024 S-3)

- (a) 21 : 289 (b) 23 : 207
(c) 32 : 387 (d) 31 : 400

70. Two sets of numbers are given below. In each set of numbers, certain mathematical operation(s) on the first number result(s) in the second number. Similarly, certain

mathematical operation(s) on the second number result(s) in the third number and so on. Which of the given options follows the same set of operations as in the given sets?

(**Note:** Operations should be performed on the whole numbers, without breaking down the numbers into their constituent digits. E.g. 13 – Operations on 13 such as adding/subtracting/multiplying to 13 can be performed. Breaking down 13 into 1 and 3 and then performing mathematical operations on 1 and 3 is not allowed.)

14 – 196 – 186 – 172; 15 – 225 – 215 – 200

(CGL 11 Sep., 2024 S-3)

- (a) 3 – 9 – 19 – 14 (b) 9 – 81 – 71 – 62
(c) 6 – 36 – 26 – 22 (d) 8 – 64 – 54 – 40

71. Two sets of numbers are given below. In each set of numbers, certain mathematical operation(s) on the first number result(s) in the second number. Similarly, certain mathematical operation(s) on the second number result(s) in the third number and so on. Which of the given options follows the same set of operations as in the given sets?

(**Note:** Operations should be performed on the whole numbers, without breaking down the numbers into their constituent digits. E.g. 13 – Operations on 13 such as adding/subtracting/multiplying to 13 can be performed. Breaking down 13 into 1 and 3 and then performing mathematical operations on 1 and 3 is not allowed.)

18 – 36 – 72 – 107; 15 – 30 – 60 – 95

(CGL 12 Sep., 2024 S-1)

- (a) 30 – 60 – 90 – 115
(b) 25 – 50 – 100 – 125
(c) 22 – 44 – 88 – 123
(d) 11 – 22 – 66 – 101

72. $\left[\frac{24}{7}\right]$ is related to $\left[\frac{12}{7}\right]$ following a certain

logic. Following the same logic, $\left[\frac{11}{15}\right]$ is

related to $\left[\frac{11}{30}\right]$. To which of the following

is $\left[\frac{9}{13}\right]$ related, following the same logic?

(**Note:** Operations should be performed on the whole numbers, without breaking down the numbers into its constituent digits. E.g. 13 – Operations on 13 such as adding /deleting/ multiplying etc. to 13 can be performed. Breaking down 13 into 1 and 3 and then performing mathematical operations on 1 and 3 is not allowed.)

(CGL 12 Sep., 2024 S-1)

- (a) $\left[\frac{15}{26}\right]$ (b) $\left[\frac{9}{26}\right]$
(c) $\left[\frac{9}{39}\right]$ (d) $\left[\frac{10}{27}\right]$

73. Select the set in which the numbers are related in the same way as are the numbers of the given sets.

(213, 157), (185, 129)

(Note: Operations should be performed on the whole numbers, without breaking down the numbers into its constituent digits. E.g., 13 – Operations on 13 such as adding/deleting/multiplying etc. to 13 can be performed. Breaking down 13 into 1 and 3 and then performing mathematical operations on 1 and 3 is not allowed)

[MRQ*] (CGL 12 Sep., 2024 S-1)

- (a) (192, 152) (b) (164, 108)
(c) (171, 123) (d) (189, 141)

74. Two sets of numbers are given below. In each set of numbers, certain mathematical operation(s) on the first number result(s) in the second number. Similarly, certain mathematical operation(s) on the second number result(s) in the third number and so on. Which of the given options follows the same set of operations as in the given sets?
(Note: Operations should be performed on the whole numbers, without breaking down the numbers into their constituent digits. E.g. 13 – Operations on 13 such as adding/subtracting/multiplying to 13 can be performed. Breaking down 13 into 1 and 3 and then performing mathematical operations on 1 and 3 is not allowed.)
10 – 12 – 8 – 15; 12 – 14 – 10 – 19

(CGL 12 Sep., 2024 S-2)

- (a) 8 – 6 – 10 – 18 (b) 11 – 13 – 9 – 17
(c) 6 – 8 – 12 – 16 (d) 15 – 13 – 9 – 19

75. Select the set in which the numbers are related in the same way as are the numbers of the following set.

(11, 16.5, 22) (14.5, 20, 25.5)

(Note: Operations should be performed on the whole numbers, without breaking down the numbers into its constituent digits. E.g. 13 – Operations on 13 such as adding/deleting/multiplying etc. to 13 can be performed. Breaking down 13 into 1 and 3 and then performing mathematical operations on 1 and 3 is not allowed.)

(CGL 12 Sep., 2024 S-2)

- (a) (14, 18.5, 23.5) (b) (21.5, 25, 31.5)
(c) (24.5, 30, 36.5) (d) (18, 23.5, 29)

76. 346 is related to 245 by certain logic. Following the same logic, 580 is related to 479. To which of the following is 613 related, following the same logic?
(Note: Operations should be performed on the whole numbers, without breaking down the numbers into its constituent digits. E.g. 13 – Operations on 13 such as adding/deleting/multiplying etc., to 13 can be performed. Breaking down 13 into 1 and 3 and then performing mathematical operations on 1 and 3 is not allowed.)

(CGL 12 Sep., 2024 S-2)

- (a) 512 (b) 460 (c) 720 (d) 630

77. Select the set in which the numbers are related in the same way as are the numbers of the following set.

3 – 5 – 30 2 – 4 – 16

(Note: Operations should be performed on the whole numbers, without breaking down the numbers into its constituent digits. E.g. 13 – Operations on 13 such as adding/subtracting/multiplying etc. to 13 can be performed. Breaking down 13 into 1 and 3 and then performing mathematical operations on 1 and 3 is not allowed)

(CGL 12 Sep., 2024 S-3)

- (a) 5 – 5 – 45 (b) 6 – 6 – 72
(c) 9 – 5 – 27 (d) 9 – 4 – 7

78. Select the set in which the numbers are related in the same way as are the numbers of the following set.

(34, 17, 27)

(42, 21, 31)

(Note: Operations should be performed on the whole numbers, without breaking down the numbers into its constituent digits. E.g. 13 – Operations on 13 such as adding/deleting/multiplying etc. to 13 can be performed. Breaking down 13 into 1 and 3 and then performing mathematical operations on 1 and 3 is not allowed.)

(CGL 12 Sep., 2024 S-3)

- (a) (38, 16, 36) (b) (54, 27, 37)
(c) (46, 23, 35) (d) (64, 34, 54)

79. 44 is related to 1936 by certain logic. Following the same logic, 59 is related to 3481. To which of the following is 77 related, following the same logic? (Note: Operations should be performed on the whole numbers, without breaking down the numbers into its constituent digits. E.g. 13 – Operations on 13 such as adding/deleting/multiplying etc., to 13 can be performed. Breaking down 13 into 1 and 3 and then performing mathematical operations on 1 and 3 is not allowed.)

(CGL 12 Sep., 2024 S-3)

- (a) 5824 (b) 5929 (c) 7642 (d) 4469

80. Select the pair in which the numbers are related to each other in the same way as are the numbers in the given pairs.

(Note: Operations should be performed on the whole numbers, without breaking down the numbers into its constituent digits. E.g. 13 – Operations on 13 such as adding/deleting/multiplying etc. to 13 can be performed. Breaking down 13 into 1 and 3 and then performing mathematical operations on 1 and 3 is not allowed.)

3 : 25 4 : 62 (CGL 13 Sep., 2024 S-1)

- (a) 5 : 123 (b) 6 : 218
(c) 7 : 345 (d) 9 : 731

81. Select the set in which the numbers are related in the same way as are the numbers of the following sets.

(Note: Operations should be performed on the whole numbers, without breaking down the numbers into its constituent digits. E.g. 13 – Operations on 13 such as adding/deleting/multiplying etc. to 13 can be performed. Breaking down 13 into 1 and 3 and then performing mathematical operations on 1 and 3 is not allowed.)

(27, 405, 3) (23, 690, 6)

(CGL 13 Sep., 2024 S-1)

- (a) (14, 364, 7) (b) (16, 448, 7)
(c) (22, 616, 7) (d) (24, 600, 5)

82. Select the set in which the numbers are related in the same way as are the numbers of the following set.

7 – 14 – 23 4 – 11 – 20

(Note: Operations should be performed on the whole numbers, without breaking down the numbers into its constituent digits. E.g. 13 – Operations on 13 such as adding/subtracting/multiplying etc. to 13 can be performed. Breaking down 13 into 1 and 3 and then performing mathematical operations on 1 and 3 is not allowed)

(CGL 13 Sep., 2024 S-1)

- (a) 7 – 15 – 22 (b) 5 – 12 – 21
(c) 9 – 12 – 22 (d) 15 – 30 – 20

83. Select the triad in which the numbers are related to each other in the same way as the numbers in the following triads.

16-40-100 8-20-50

(Note: Operations should be performed on the whole numbers, without breaking down the numbers into its constituent digits. E.g. 13 – Operations on 13 such as adding/deleting/multiplying etc., to 13 can be performed. Breaking down 13 into 1 and 3 and then performing mathematical operations on 1 and 3 is not allowed.)

(CGL 13 Sep., 2024 S-2)

- (a) 18-50-110 (b) 12-30-120
(c) 24-60-150 (d) 22-74-185

84. 16 is related to 30 following a certain logic. Following the same logic, 81 is related to 110. To which of the following is 49 related, following the same logic? (Note: Operations should be performed on the whole numbers, without breaking down the numbers into its constituent digits. E.g. 13 – Operations on 13 such as adding/deleting/multiplying etc., to 13 can be performed. Breaking down 13 into 1 and 3 and then performing mathematical operations on 1 and 3 is not allowed.)

(CGL 13 Sep., 2024 S-2)

- (a) 60 (b) 64 (c) 90 (d) 72

85. Select the triad in which the numbers are related to each other in the same way as are the numbers of the given triads.
(148, 126, 104), (98, 76, 54)
(Note: Operations should be performed on the whole numbers, without breaking down the numbers into its constituent digits. E.g. 13 – Operations on 13 such as adding/deleting/multiplying etc. to 13 can be performed. Breaking down 13 into 1 and 3 and then performing mathematical operations on 1 and 3 is not allowed.)
[MRQ*] (CGL 13 Sep., 2024 S-2)
(a) (149, 137, 115) (b) (157, 135, 113)
(c) (128, 104, 82) (d) (134, 102, 90)
86. 13 is related to 117 following a certain logic. Following the same logic, 23 is related to 207. To which of the following is 51 related, following the same logic?
(Note: Operations should be performed on the whole numbers, without breaking down the numbers into its constituent digits. E.g. 13 – Operations on 13 such as adding /deleting /multiplying etc. to 13 can be performed. Breaking down 13 into 1 and 3 and then performing mathematical operations on 1 and 3 is not allowed.)
[MRQ*] (CGL 13 Sep., 2024 S-3)
(a) 350 (b) 459 (c) 359 (d) 450
87. Select the option in which the numbers share the same relationship as that shared by the given pair of numbers.
(Note: Operations should be performed on the whole numbers, without breaking down the numbers into its constituent digits. E.g. 13 – Operations on 13 such as adding/deleting/multiplying etc. to 13 can be performed. Breaking down 13 into 1 and 3 and then performing mathematical operations on 1 and 3 is not allowed.)
63 : 441 51 : 357
[MRQ*] (CGL 13 Sep., 2024 S-3)
(a) 68 : 340 (b) 54 : 324
(c) 89 : 96 (d) 39 : 273
88. Two sets of numbers are given below. In each set of numbers, certain mathematical operation(s) on the first number result(s) in the second number. Similarly, certain mathematical operation(s) on the second number result(s) in the third number and so on. Which of the given options follows the same set of operations as in the given sets?
(Note: Operations should be performed on the whole numbers, without breaking down the numbers into their constituent digits. E.g. 13 – Operations on 13 such as adding/subtracting/multiplying to 13 can be performed. Breaking down 13 into 1 and 3 and then performing mathematical operations on 1 and 3 is not allowed.)
9 – 27 – 31 – 36; 10 – 30 – 34 – 39
(CGL 13 Sep., 2024 S-3)
(a) 5 – 15 – 19 – 24 (b) 8 – 24 – 28 – 35
(c) 11 – 33 – 38 – 44 (d) 15 – 45 – 50 – 55

89. 30 is related to 41 following certain logic. Following the same logic, 14 is related to 21. To which of the following numbers is 54 related, following the same logic?
(Note: Operations should be performed on the whole numbers, without breaking down the numbers into its constituent digits. E.g. 13 – Operations on 13 such as adding/deleting/multiplying etc., to 13 can be performed. Breaking down 13 into 1 and 3 and then performing mathematical operations on 1 and 3 is not allowed.)
(CGL 17 Sep., 2024 S-1)
(a) 69 (b) 63 (c) 53 (d) 59
90. 189 is related to 21 following a certain logic. Following the same logic, 234 is related to 26. To which of the following is 468 related, following the same logic?
(Note: Operations should be performed on the whole numbers, without breaking down the numbers into its constituent digits. E.g. 13 – Operations on 13 such as adding/deleting/multiplying etc. to 13 can be performed. Breaking down 13 into 1 and 3 and then performing mathematical operations on 1 and 3 is not allowed.)
(CGL 17 Sep., 2024 S-1)
(a) 58 (b) 48 (c) 52 (d) 54
91. Select the set in which the numbers are related in the same way as are the numbers of the given sets.
(429, 514), (688, 773)
(Note: Operations should be performed on the whole numbers, without breaking down the numbers into its constituent digits. E.g., 13 – Operations on 13 such as adding/deleting/multiplying etc. to 13 can be performed. Breaking down 13 into 1 and 3 and then performing mathematical operations on 1 and 3 is not allowed.)
(CGL 17 Sep., 2024 S-1)
(a) (407, 512) (b) (546, 631)
(c) (319, 399) (d) (396, 491)
92. 34 is related to 191 by certain logic. Following the same logic, 56 is related to 301. To which of the following is 63 related, following the same logic?
(Note: Operations should be performed on the whole numbers, without breaking down the numbers into its constituent digits. E.g. 13 – Operations on 13 such as adding/deleting/multiplying etc., to 13 can be performed. Breaking down 13 into 1 and 3 and then performing mathematical operations on 1 and 3 is not allowed.)
(CGL 17 Sep., 2024 S-2)
(a) 340 (b) 386 (c) 336 (d) 319
93. 27 is related to 119 following a certain logic. Following the same logic, 33 is related to 143. To which of the following is 42 related, following the same logic?

(Note: Operations should be performed on the whole numbers, without breaking down the numbers into its constituent digits. E.g. 13 – Operations on 13 such as adding/deleting/multiplying etc., to 13 can be performed. Breaking down 13 into 1 and 3 and then performing mathematical operations on 1 and 3 is not allowed.)

(CGL 17 Sep., 2024 S-2)

- (a) 162 (b) 153 (c) 179 (d) 188

94. Select the option in which the numbers share the same relationship as that shared by the given pair of numbers.

(Note: Operations should be performed on the whole numbers, without breaking down the numbers into its constituent digits. E.g. 13 – Operations on 13 such as adding/deleting/multiplying etc. to 13 can be performed. Breaking down 13 into 1 and 3 and then performing mathematical operations on 1 and 3 is not allowed.)

8 : 79 6 : 51 (CGL 17 Sep., 2024 S-2)

- (a) 7 : 62 (b) 4 : 32
(c) 9 : 96 (d) 5 : 39

95. Select the option in which the numbers share the same relationship as that shared by the given pair of numbers.

(Note: Operations should be performed on the whole numbers, without breaking down the numbers into its constituent digits. E.g. 13 – Operations on 13 such as adding/deleting/multiplying etc. to 13 can be performed. Breaking down 13 into 1 and 3 and then performing mathematical operations on 1 and 3 is not allowed.)

17 : 67 21 : 79 (CGL 17 Sep., 2024 S-3)

- (a) 34 : 118 (b) 23 : 69
(c) 33 : 110 (d) 42 : 100

96. Select the triad in which the numbers are related in the same way as are the numbers of the given triads.

(54, 65, 76), (48, 59, 70)

(Note: Operations should be performed on the whole numbers, without breaking down the numbers into its constituent digits. E.g. 13 – Operations on 13 such as adding/deleting/multiplying etc. to 13 can be performed. Breaking down 13 into 1 and 3 and then performing mathematical operations on 1 and 3 is not allowed.)

(CGL 17 Sep., 2024 S-3)

- (a) (42, 57, 68) (b) (27, 38, 50)
(c) (38, 49, 60) (d) (31, 41, 53)

97. Select the set in which the numbers are related in the same way as are the numbers of the following sets.

(Note: Operations should be performed on the whole numbers, without breaking down the numbers into its constituent digits. E.g. 13 – Operations on 13 such as adding/deleting/multiplying etc. to 13 can

200. Select the option that is related to the third term in the same way as the second term is related to the first term.

PRACTISE : ACEIPRST :: TECHNOLOGY : ?

(CGL 18 Apr., 2022 S-3)

- (a) HCETONYGLO
(b) CEGHLNOPTY
(c) CEGHLNOOTY
(d) CEGLHOONTY

201. Select the option that is related to the third letter cluster in the same way as the second letter – cluster is related to the first letter – cluster.

LGS : PLY :: MKB : ?

(CGL 19 Apr., 2022 S-3)

- (a) QPH (b) QOF
(c) RQG (d) PQG

202. Select the option that is related to the fifth letter – cluster in the same way as the second letter – cluster is related to the first letter – cluster and the fourth letter-cluster is related to the third letter – cluster.

GAIN : HBKP :: ACHE : BDJG :: CAKE : ?

(CGL 05 Dec., 2022 S-1)

- (a) DBNH (b) DBMH
(c) DBNG (d) DBMG

203. Select the option that is related to the fifth letter cluster in the same way as the second letter – cluster is related to the first letter – cluster and the fourth letter – cluster is related to the third letter – cluster.

HERO : JGPM :: FLOW : HNNU :: DIAL : ?

(CGL 02 Dec., 2022 S-1)

- (a) KYFJ (b) JFYK (c) FLIJ (d) FKYJ

204. Select the option that is related to the fifth letter cluster in the same way as the second letter – cluster is related to the first letter – cluster and the fourth letter cluster is related to the third letter – cluster.

GAVE : AGEV :: KEPT : EKTP :: ACID : ?
(CGL 01 Dec., 2022 S-2)

- (a) CIAD (b) CAID
(c) ACID (d) CADI

205. Select the option that is related to the fifth letter cluster in the same way as the second letter – cluster is related to the first letter – cluster and the fourth letter cluster is related to the third letter – cluster.

JUMPED : LWORGF :: QUICKS : SWKEMU :: FUZING : ?

(CGL 01 Dec., 2022 S-2)

- (a) HKWIPB (b) IPKBWH
(c) HWBKPI (d) HWKBPI

206. Select the option that is related to the fifth letter-cluster in the same way as the second letter – cluster is related to the first letter – cluster and the fourth letter cluster is related to the third letter – cluster.

ROSE : IVQS :: SUIT : XLWT :: TIME : ?

(CGL 01 Dec., 2022 S-3)

- (a) IPKU (b) IPKV
(c) JPKU (d) JPKV

207. Select the option that is related to the fifth letter cluster in the same way as the second letter – cluster is related to the first letter – cluster and the fourth letter cluster is related to the third letter – cluster.

BEAR : DFCS :: FEEL : HFGM :: MANY : ?

(CGL 01 Dec., 2022 S-4)

- (a) OBPY (b) OCPZ
(c) OBPZ (d) OBQZ

208. Select the option that is related to the fifth letter cluster in the same way as the second letter – cluster is related to the first letter – cluster and the fourth letter cluster is related to the third letter – cluster.

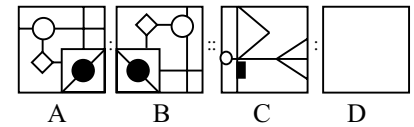
LAMB : DPEQ :: MOTH : JWSR :: NERD : ?

(CGL 01 Dec., 2022 S-4)

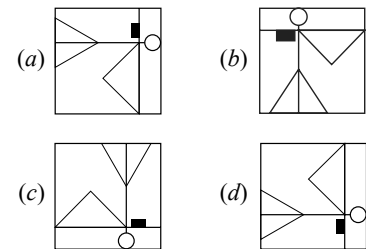
- (a) FVJS (b) FUJS
(c) FVIS (d) FUIS

IMAGE BASED

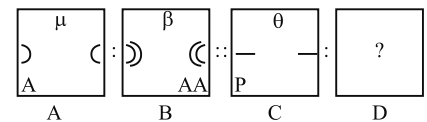
209. Figure A is related to B in a certain pattern. Following the same pattern, figure C is related to D. Study the pattern and select the figure which should be in place of D.



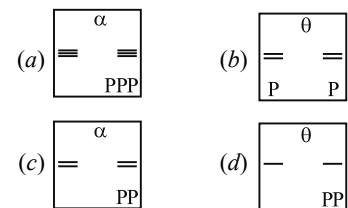
(CGL Tier-2, 18 Jan., 2025, S-1)



210. Figure A is related to B in a certain pattern. Following the same pattern, figure C is related to D. Study the pattern and select the figure which should be placed in place of D.



(CGL Tier-2, 20 Jan., 2025, S-1)



Answer Keys

- | | | | | | | | | | |
|----------|----------|----------|----------|----------|----------|----------|----------|----------|----------|
| 1. (c) | 2. (b) | 3. (d) | 4. (c) | 5. (d) | 6. (c) | 7. (b) | 8. (c) | 9. (d) | 10. (a) |
| 11. (a) | 12. (b) | 13. (a) | 14. (a) | 15. (d) | 16. (d) | 17. (a) | 18. (d) | 19. (d) | 20. (b) |
| 21. (a) | 22. (d) | 23. (a) | 24. (c) | 25. (c) | 26. (b) | 27. (a) | 28. (c) | 29. (b) | 30. (d) |
| 31. (c) | 32. (b) | 33. (b) | 34. (a) | 35. (b) | 36. (b) | 37. (c) | 38. (c) | 39. (a) | 40. (b) |
| 41. (d) | 42. (c) | 43. (c) | 44. (c) | 45. (a) | 46. (b) | 47. (b) | 48. (a) | 49. (d) | 50. (c) |
| 51. (a) | 52. (d) | 53. (b) | 54. (b) | 55. (c) | 56. (d) | 57. (c) | 58. (d) | 59. (c) | 60. (b) |
| 61. (c) | 62. (d) | 63. (c) | 64. (a) | 65. (a) | 66. (c) | 67. (b) | 68. (c) | 69. (a) | 70. (b) |
| 71. (c) | 72. (b) | 73. (b) | 74. (b) | 75. (d) | 76. (a) | 77. (b) | 78. (b) | 79. (b) | 80. (a) |
| 81. (d) | 82. (b) | 83. (c) | 84. (d) | 85. (b) | 86. (b) | 87. (d) | 88. (a) | 89. (a) | 90. (c) |
| 91. (b) | 92. (c) | 93. (c) | 94. (c) | 95. (a) | 96. (c) | 97. (d) | 98. (a) | 99. (a) | 100. (c) |
| 101. (d) | 102. (b) | 103. (a) | 104. (c) | 105. (a) | 106. (c) | 107. (a) | 108. (b) | 109. (b) | 110. (b) |

111. (d)	112. (d)	113. (d)	114. (b)	115. (b)	116. (c)	117. (d)	118. (d)	119. (c)	120. (d)
121. (b)	122. (a)	123. (d)	124. (b)	125. (d)	126. (a)	127. (a)	128. (a)	129. (a)	130. (c)
131. (c)	132. (c)	133. (d)	134. (c)	135. (a)	136. (b)	137. (c)	138. (d)	139. (c)	140. (d)
141. (b)	142. (b)	143. (d)	144. (b)	145. (a)	146. (d)	147. (a)	148. (b)	149. (b)	150. (c)
151. (b)	152. (d)	153. (b)	154. (d)	155. (c)	156. (d)	157. (c)	158. (b)	159. (b)	160. (c)
161. (b)	162. (c)	163. (b)	164. (c)	165. (b)	166. (a)	167. (b)	168. (c)	169. (b)	170. (d)
171. (b)	172. (c)	173. (a)	174. (b)	175. (b)	176. (b)	177. (c)	178. (c)	179. (d)	180. (d)
181. (b)	182. (a)	183. (c)	184. (c)	185. (a)	186. (b)	187. (b)	188. (a)	189. (a)	190. (d)
191. (b)	192. (a)	193. (b)	194. (a)	195. (c)	196. (a)	197. (d)	198. (b)	199. (b)	200. (c)
201. (a)	202. (d)	203. (d)	204. (d)	205. (c)	206. (a)	207. (c)	208. (d)	209. (b)	210. (c)

Solutions with Detailed Explanations

1. (c) Deed – reaction

Response – inciting

2. (b) Phone is a device by which one can talk.

Similarly,

Television is a device by which can view.

3. (d) Egypt : Nile → Nile is the river of Egypt.

Similarly,

Myanmar : Irrawaddy → Irrawaddy is the river of Myanmar.

4. (c) Blossom is antonyms of wither.

Similarly,

Stagnate is antonyms to flow.

5. (d) As, Temerity is the opposite of shyness.

Similarly, Pique is the opposite of Delight.

6. (c) Presence: Abundance ⇒ The relationship here is degree-based. Both word indicate something that exist, but abundance implies a much larger of existence. Similarly, 'infinite' refers to something immeasurably large, and 'cosmic' refers to something vast.

7. (b) Logic: Deficiency of calcium lead to the condition Osteomalacia.

Similarly, Deficiency of Iron lead to the condition of Anaemia.

8. (c) Acrimony is antonym of humanity.

Similarly,

Wield is antonym of forgo.

9. (d) As, Summer is one of the seasons.

Similarly, Cotton is one of material of cloth.

10. (a) As, Lavish is antonym of Austere.

Similarly, Prejudiced is antonym of Impartial.

11. (a) As a virus is a specific type of parasite.

Similarly, Amaltas is a specific type of tree.

12. (b) As, cricket players get Duleep trophy as an award.

Similarly, Hockey player gets Agha Khan cup as an award

13. (a) As, frivolous is opposite of Big, meaning small or unimportant. Similarly deride is antonym of encourage meaning demotivated.

14. (a) As ample is synonyms of abundant. Similarly, substantial is synonyms of considerable.

15. (d) As vacant is the synonym of Empty. Similarly, Crowd is the synonym of Throng.

16. (d) As Magic is done by the magician. Similarly, Dance is done by the Dancer.

17. (a) As Magnify is the synonym of Expand. Similarly, Curtail is the synonym of Restrict.

18. (d) As Noise is the antonym of Silence. Similarly, Light is the antonym of Darkness.

19. (d) As Meek is an antonym of Bold. Similarly, Spend is an antonym of Hoard.

20. (b) As, Sugar is a synonym of Sweet. Similarly, Habanero is a synonym of Spicy.

21. (a) Persist is a synonyms of Endure.

Similarly, Stall is a synonyms of Delay

22. (d) As, we put plants in a pot to grow and nurture. Similarly, we put Fishes in an aquarium to grow and nurture.

23. (a) As, cow produces Milk, Similarly, Sheep produces Wool.

24. (c) As, Empty is the synonym of Vacant.

Similarly, Huge is the synonym of Enormous.

25. (c) As, Tiger is the national animal of India. Similarly, Kangaroo is the national animal of Australia.

26. (b) Given, "Library" is related to "Books"

Here we find books in the library similarly, we find artefacts in the museum.

27. (a) As,

Race are run on tracks.

Similarly,

athletic are performed in stadium.

28. (c) As,

Handwriting: Graphology — The study of handwriting is called Graphology. Similarly,

Matter: Physics — The study of matter is called Physics.

29. (b) The logic is:

Nascent : Young → Nascent and Young are synonyms of each other.

Similarly, Adjunct : ? → Adjunct and Supportive are synonyms of each other. Hence, 'Supportive' is the correct answer.

30. (d) Calendar: Date: Calendar is a chart of pages showing the days, weeks, and months of a particular year.

Similarly,

Clock: Time: Clock is a device showing the time of a particular day.

31. (c) Beverages: Tea-Tea is a hot beverage made from dried crushed leaves of the tea plant in boiling water.

Similarly,

Medicine: Analgesics is a group of drugs that are used as painkillers.

32. (b) As, sun is the source of heat.

Likewise, fruit is the source of vitamin.

33. (b) As, a movie is created by a director.

Similarly, an orchestra is directed by a conductor.

34. (a) As, races are run on tracks. Similarly, athletics are combine performed in stadiums.

35. (b) As, library is the place where Books are kept. Similarly, museum is the place where Arte facts are kept.

36. (b) As, a phone is a device by which we can Talk. Similarly, television is a device by which we can View.

37. (c) As, pandas relies on bamboo for food. Similarly, a koala depends on eucalyptus.

38. (c) As, Earth is a type of planet. Similarly a moon is a type of satellite.

39. (a) As, cloths are kept in a closet. Similarly, gun are stored in an armoury.

40. (b) As, sparrows lives in a tree. Similarly, fish lives in water.

41. (d) Logic: First Number $- 30 =$ Second Number, Second Number $- 50 =$ Third Number
 As, (215, 185, 135)
 $\Rightarrow 215 - 30 = 185, 185 - 50 = 135$
 And, (276, 246, 196)
 $\Rightarrow 276 - 30 = 246, 246 - 50 = 196$
 Similarly, (238, 208, 158)
 $\Rightarrow 238 - 30 = 208, 208 - 50 = 158$

42. (c) Logic is : First number $\times 9 + 6 =$ Second number
 As, $17 : 159$
 $\Rightarrow 17 \times 9 + 6 = 153 + 6 = 159.$
 And, $11 : 105 \Rightarrow 11 \times 9 + 6 = 99 + 6 = 105.$
 Similarly, $13 : ? \Rightarrow 13 \times 9 + 6 = 117 + 6 = 123.$

43. (c) Logic: If (a, b, c) then, $(b \div a) \div 2 = c$
 As, $(25, 150, 3) = (150 \div 25) \div 2 = 6 \div 2 = 3$
 And, $(18, 180, 5) = (180 \div 18) \div 2 = 10 \div 2 = 5$
 Similarly, $(52, 728, 7) = (728 \div 52) \div 2 = 14 \div 2 = 7$

44. (c) Logic: If $a : b$ then $(a)^2 - 2 \times a = b$
 As, $7 : 35 = (7)^2 - 2 \times 7 = 49 - 14 = 35$
 And, $21 : 399 = (21)^2 - 2 \times 21 = 441 - 42 = 399$
 Similarly, $4 : ? = (4)^2 - 2 \times 4 = 16 - 8 = 8$

45. (a) Logic: If $a : b$, then
 $(b^3) \times 6 = a$
 As, $750 : 5$
 $= (5)^3 \times 6 = 125 \times 6 = 750$
 And, $384 : 4$
 $= (4)^3 \times 6 = 64 \times 6 = 384$
 Similarly,
 $3072 : ?$
 $3072 \div 6 = 512 = (8)^3$
 thus, $? = 8$

46. (b) Logic: If a related to b then, $a + 11^2 = b$
 As, 31 related to 152
 $31 + 11^2 = 31 + 121 = 152$
 And,
 47 related to 168
 $47 + 11^2 = 47 + 121 = 168$
 Similarly,
 66 related to?
 $66 + 11^2 = 66 + 121 = 187$

47. (b) Logic: If (a, b) then, $a + 64 = b$
 As, $(149, 213) \Rightarrow 149 + 64 = 213$
 And, $(168, 232) \Rightarrow 168 + 64 = 232$
 Similarly, $(153, 217) \Rightarrow 153 + 64 = 217$

48. (a) $(2, 3, 17) \Rightarrow 2 \times 3 + 11 = 6 + 11 = 17$
 $(5, 2, 21) \Rightarrow 5 \times 2 + 11 = 10 + 11 = 21$
 Similarly, $(3, 4, 23) \Rightarrow 3 \times 4 + 11 = 12 + 11 = 23$

49. (d) $(18, 378, 7) \Rightarrow 18 \times 7 \times 3 = 378$
 $(14, 210, 5) \Rightarrow 14 \times 5 \times 3 = 210$
 Similarly,
 $(15, 405, 9) \Rightarrow 15 \times 9 \times 3 = 405$

50. (c) $(12, 145) \rightarrow 12^2 + 1 = 144 + 1 = 145.$
 $(9, 82) \rightarrow 9^2 + 1 = 81 + 1 = 82.$
 Then, $(14, 197) \rightarrow 14^2 + 1 = 196 + 1$

51. (a) $(19, 456, 6) \Rightarrow 19 \times 6 \times 4 = 456$
 $(16, 320, 5) \Rightarrow 16 \times 5 \times 4 = 320$
 Similarly, $(18, 648, 9) = 18 \times 9 \times 4 = 648$

52. (d) Logic: If (a, b, c) , then $[(b - a) + 2] + b = a$
 As, $(34, 47, 62) = [(47 - 34) + 2] + 47 = (13 + 2) + 47 = 62$
 And, $(119, 142, 167) = [(142 - 119 + 2] + 142 = (23 + 2) + 142 = 167$
 Similarly, $(79, 98, 119) = [(98 - 79) + 2] + 98 = 19 + 2 + 98 = 119$

53. (b) Logic: $10 + \frac{10}{2} = 10 + 5 = 15$
 And, $42 + \frac{42}{2} = 42 + 21 = 63$
 Similarly, $22 + \frac{22}{2} = 22 + 11 = 33.$

54. (b) $(79, 58, 62) \Rightarrow (79 - 58) = 21, (62 - 58) = 4$
 and, $(54, 33, 37) \Rightarrow (54 - 33) = 21, (37 - 33) = 4$
 Similarly, $(66, 45, 49) \Rightarrow (66 - 45) = 21, (49 - 45) = 4$

55. (c) $(7, 9, 48) \Rightarrow (7 + 9) \times 3 = 48$
 $(6, 8, 42) \Rightarrow (6 + 8) \times 3 = 42$
 Similarly,
 $(11, 13, 72) \Rightarrow (11 + 13) \times 3 = 72$

56. (d) Logic: $12 \times 2 = 24 + 1 = 25$
 and $11 \times 2 = 22 + 1 = 23$
 Similarly,
 $21 \times 2 = 42 + 1 = 43$

57. (c) Logic: $104 \div 8 = 13$
 and $136 \div 8 = 17$
 Similarly, $232 \div 8 = 29$

58. (d) $(25, 300, 6) \Rightarrow 25 \times 6 \times 2 = 300$
 $(19, 342, 9) \Rightarrow 19 \times 9 \times 2 = 342$
 Similarly,
 $(18, 288, 8) \Rightarrow 18 \times 8 \times 2 = 288$

59. (c) As, $(173, 246) \Rightarrow 173 + 73 = 246$
 and, $(148, 196) \Rightarrow 148 + 48 = 196$
 Similarly,
 $(154, 208) = 154 + 54 = 208.$

60. (b) As, $(121, 93, 214) \Rightarrow 121 + 93 = 214$
 And, $(115, 87, 202) \Rightarrow 115 + 87 = 202,$
 Similarly, $(97, 112, 209)$
 $\Rightarrow 97 + 112 = 209.$

61. (c) Logic: $62 + 2 = 64 = 8^2$
 $79 + 2 = 81 = 9^2$ $\swarrow (9-8)=1$
 and $98 + 2 = 100 = 10^2$
 $119 + 2 = 121 = 11^2$ $\swarrow (11-10)=1$
 Similarly, $14 + 2 = 16 = 4^2$
 $23 + 2 = 5^2$ $\swarrow (5-4)=1$

62. (d) Logic: If (a, b) , then $\frac{a}{2} = b$
 As, $(280, 140) \Rightarrow \frac{280}{2} = 140$
 And, $(186, 93) \Rightarrow \frac{186}{2} = 93$

Similarly, $(118, 59) \Rightarrow \frac{118}{2} = 59$

63. (c) Logic: First letter $\times 7 =$ Second number.
 As, $16 \times 7 = 112$
 And $26 \times 7 = 182$
 Similarly, $44 \times 7 = 308.$

64. (a) Logic: $(1st\ number)^3 = 2nd\ number.$
 As, $8^3 = 512,$ And $12^3 = 1728$
 Similarly, $15^3 = 3375$

65. (a) Logic = If (a, b, c) then $(c - a) \div 2 = b$
 As, $(34, 15, 64) \Rightarrow (64 - 34) \div 2 = 15$
 And, $(29, 17, 63) \Rightarrow (63 - 29) \div 2 = 17$
 Similarly, $(25, 14, 53) = (53 - 25) \div 2 = 28 \div 2 = 14.$

66. (c) Logic: If $a - b$ if $a - 3 = b$
 As, $186 - 83 = 103$
 And, $156 - 83 = 73$
 Similarly $95 - 83 = 12.$

67. (b) Logic: If $a - b - c$ then, $(a \times 2) + 1 = b,$
 $b \times 2 + 1 = c$
 As, $8 \times 2 + 1 = 17, 17 \times 2 + 1 = 35$
 And, $23 \times 2 + 1 = 47, 47 \times 2 + 1 = 95$
 Similarly, $12 \times 2 + 1 = 25,$
 $25 \times 2 + 1 = 51$

68. (c) As, $(66, 57, 48) \Rightarrow (66 + 48) \div 2 = 57$
 and, $(94, 85, 76) \Rightarrow (94 + 76) \div 2 = 85$
 Similarly,
 $(81, 72, 63) \Rightarrow (81 + 63) \div 2 = 72$

69. (a) As, $17 \times 9 + 100 = 253$
 and $19 \times 9 + 100 = 271$
 Similarly, $21 \times 9 + 100 = 289.$

70. (b) $14 \xrightarrow{+8} 196 \xrightarrow{+8} 186 \xrightarrow{+8} 172$
 $15 \xrightarrow{+8} 225 \xrightarrow{+8} 215 \xrightarrow{+8} 200$
 $9 \xrightarrow{+8} 81 \xrightarrow{+8} 71 \xrightarrow{+8} 62$

71. (c) As, $18 \xrightarrow{\times 2} 36 \xrightarrow{\times 2} 72 \xrightarrow{+35} 107$
 and, $15 \xrightarrow{\times 2} 30 \xrightarrow{\times 2} 60 \xrightarrow{+35} 95$
 Similarly,
 $22 \xrightarrow{\times 2} 44 \xrightarrow{\times 2} 88 \xrightarrow{+35} 123$

72. (b) $\frac{24}{2} \div 2 = \frac{12}{7}$
 and $\frac{11}{15} \div 2 = \frac{11}{30}$
 Similarly,
 $\frac{9}{13} \div 2 = \frac{9}{26}.$

73. (b) $(213, 157) \Rightarrow 213 - 56 = 157$
 $(185, 129) \Rightarrow 185 - 56 = 129$
 Similarly, $(164 - 56) = 108$

74. (b) As, $10 \xrightarrow{+2} 12 \xrightarrow{-4} 8 \xrightarrow{(8+2-3)} 15$
 and, $12 \xrightarrow{+2} 14 \xrightarrow{-4} 10 \xrightarrow{(10+2-3)} 19$
 Similarly,
 $11 \xrightarrow{+2} 13 \xrightarrow{-4} 9 \xrightarrow{(9+2-3)} 17$

75. (d) Logic: If $(a, b, c) = a + 5.5 = b, b + 5.5 = c$
 As, $(11, 16.5, 22) \Rightarrow 11 + 5.5 = 16.5, 16.5 + 5.5 = 22$

Important Books For SSC Exams



₹ 699/-

PW **PHYSICS WALLAH**
PUBLICATION

To Buy PW Books



SCAN ME!

To share Feedback



SCAN ME!

ISBN 978-93-6034-812-0



9 789360 348120
28aefdcf-97d6-4baf-810b-83d93a99d493